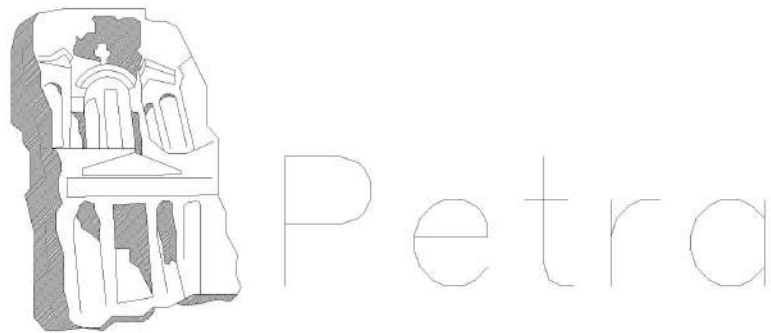


PRODUCED BY AN AUTODESK EDUCATIONAL PRODUCT



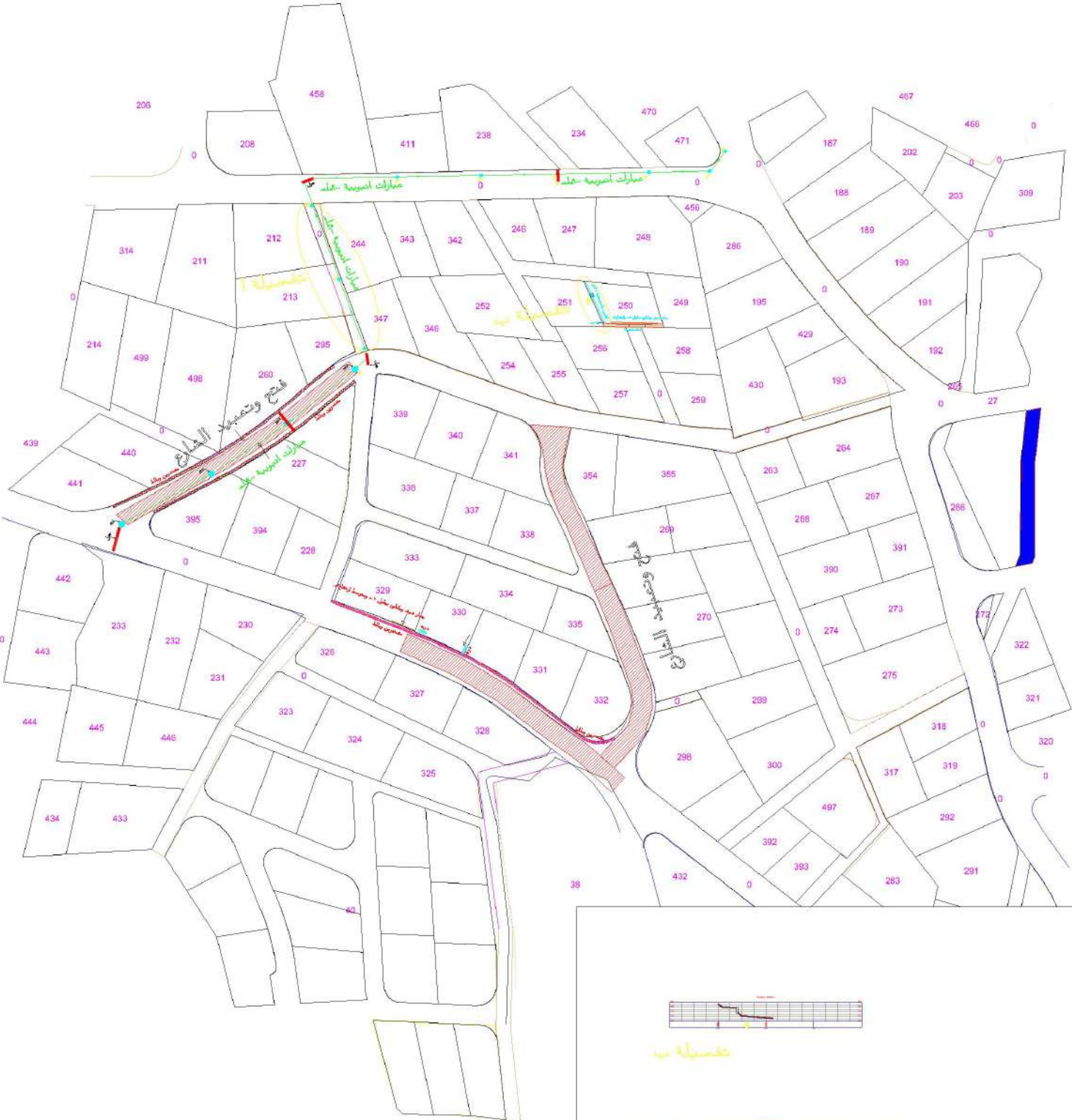
*Petra Development & Tourism Region Authority*

***Petra Development & Tourism  
Region Authority***

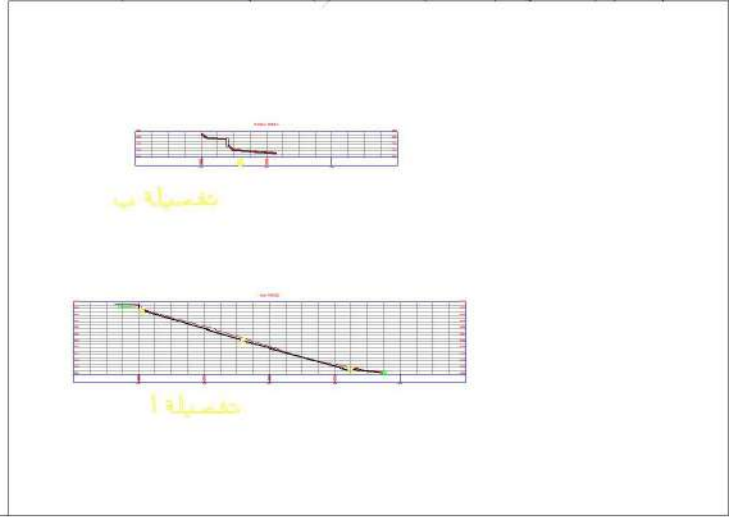
**Wadi Musa Drainage Project**

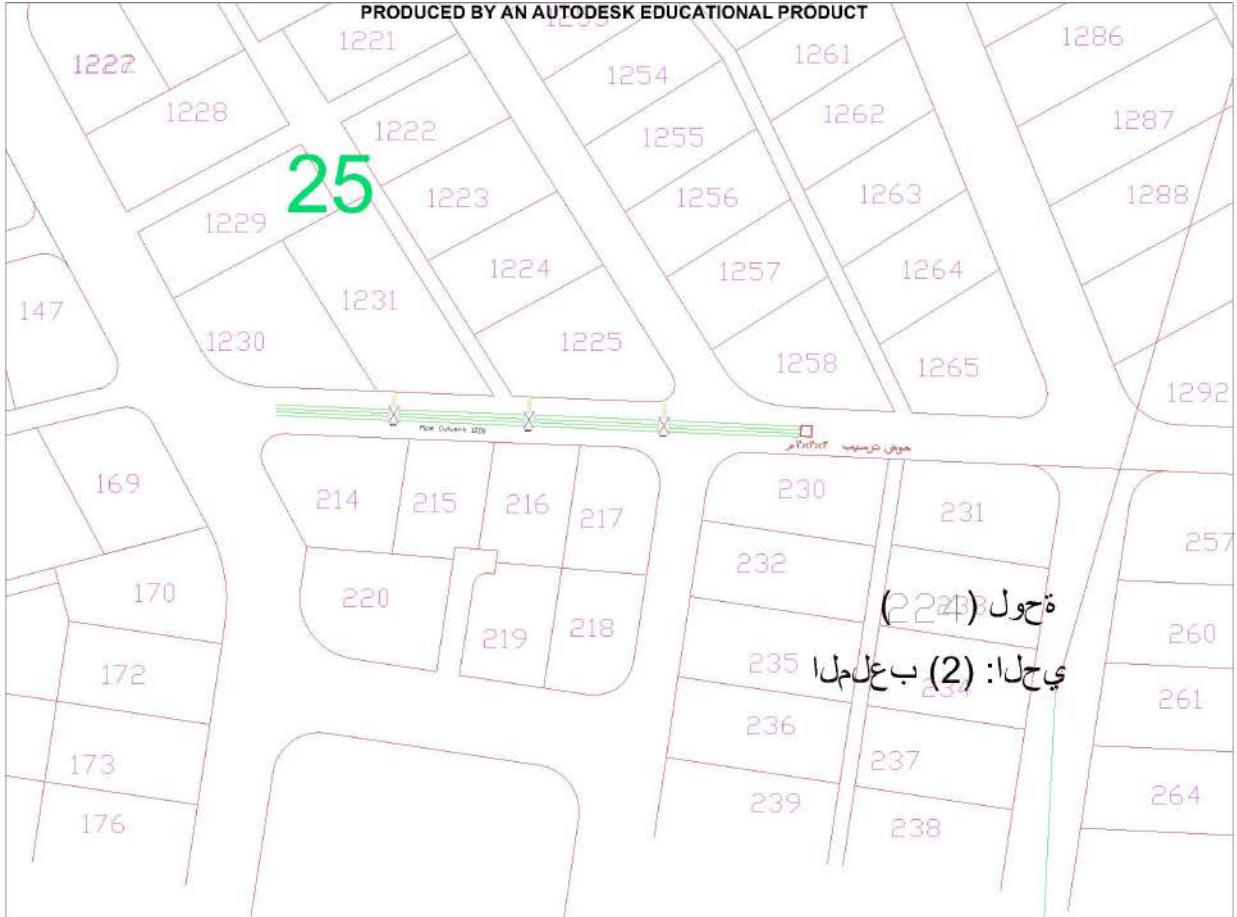
**2019**

PRODUCED BY AN AUTODESK EDUCATIONAL PRODUCT

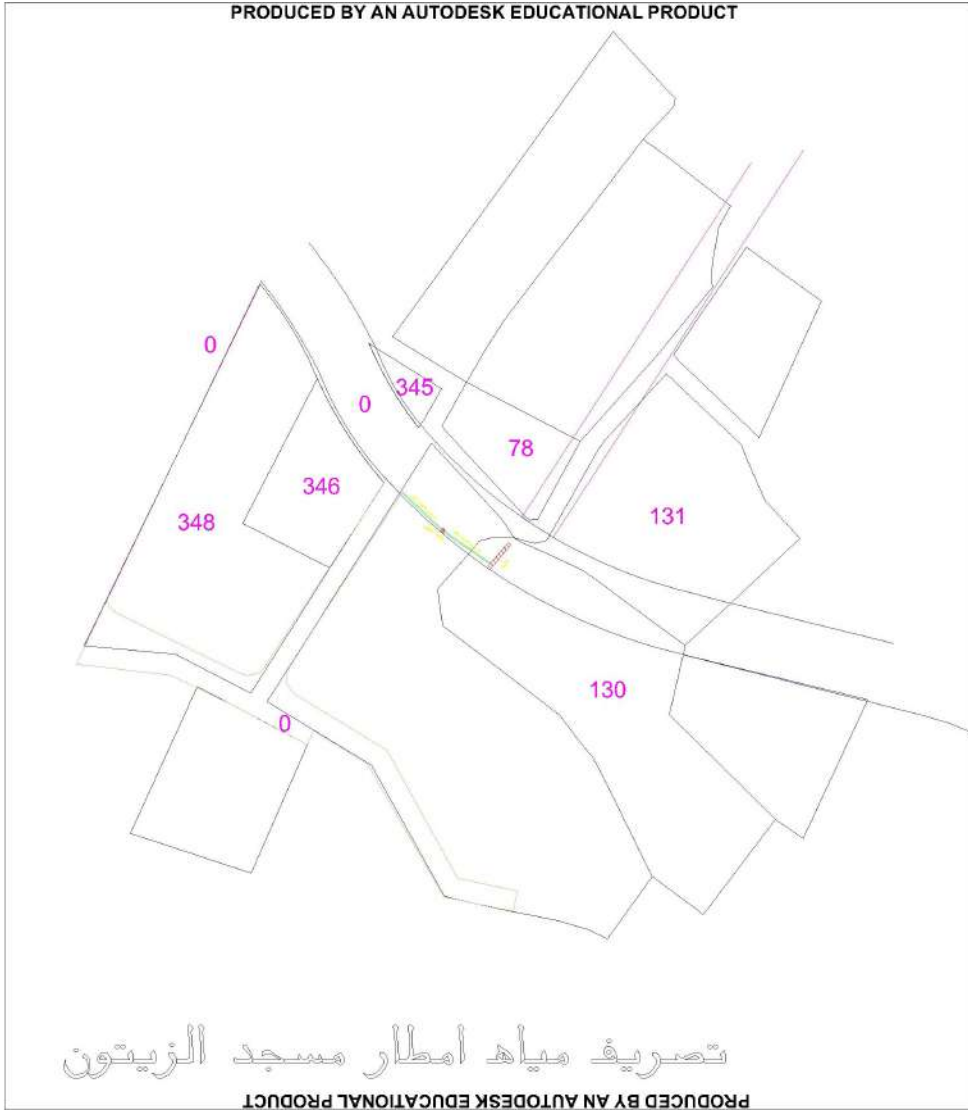


تصريف مياه مطار المشرف



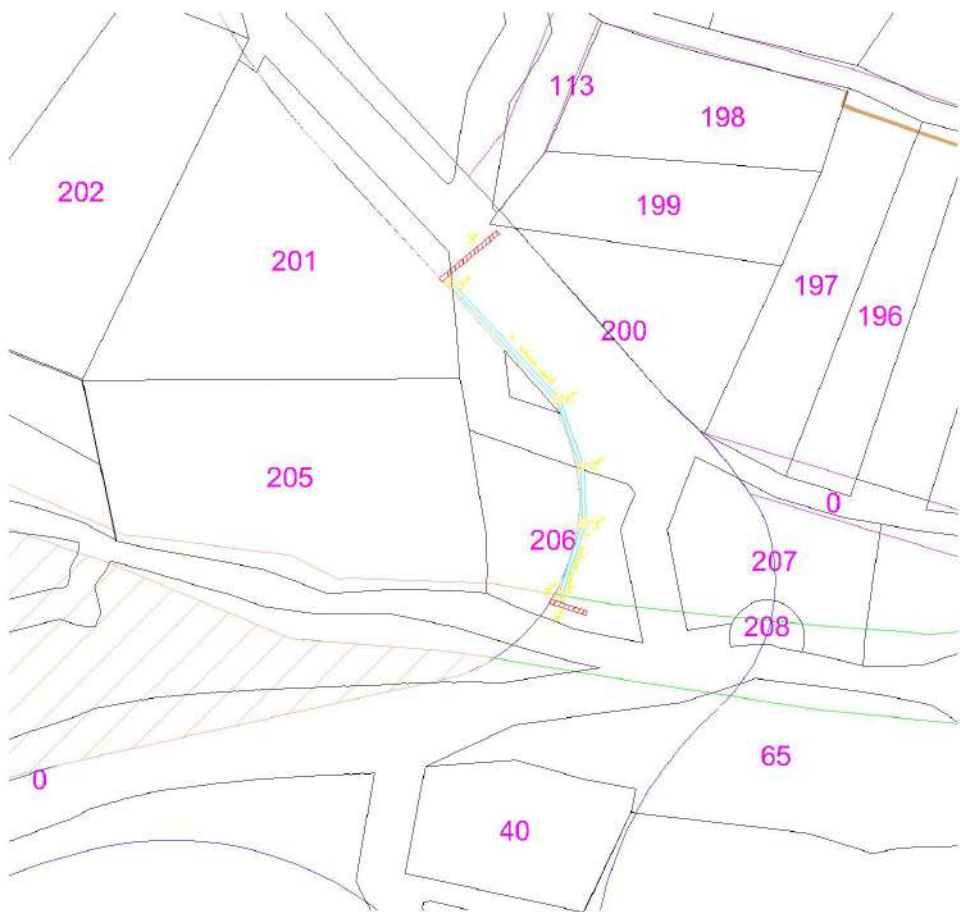


## تصريف مياه مطار البقعة

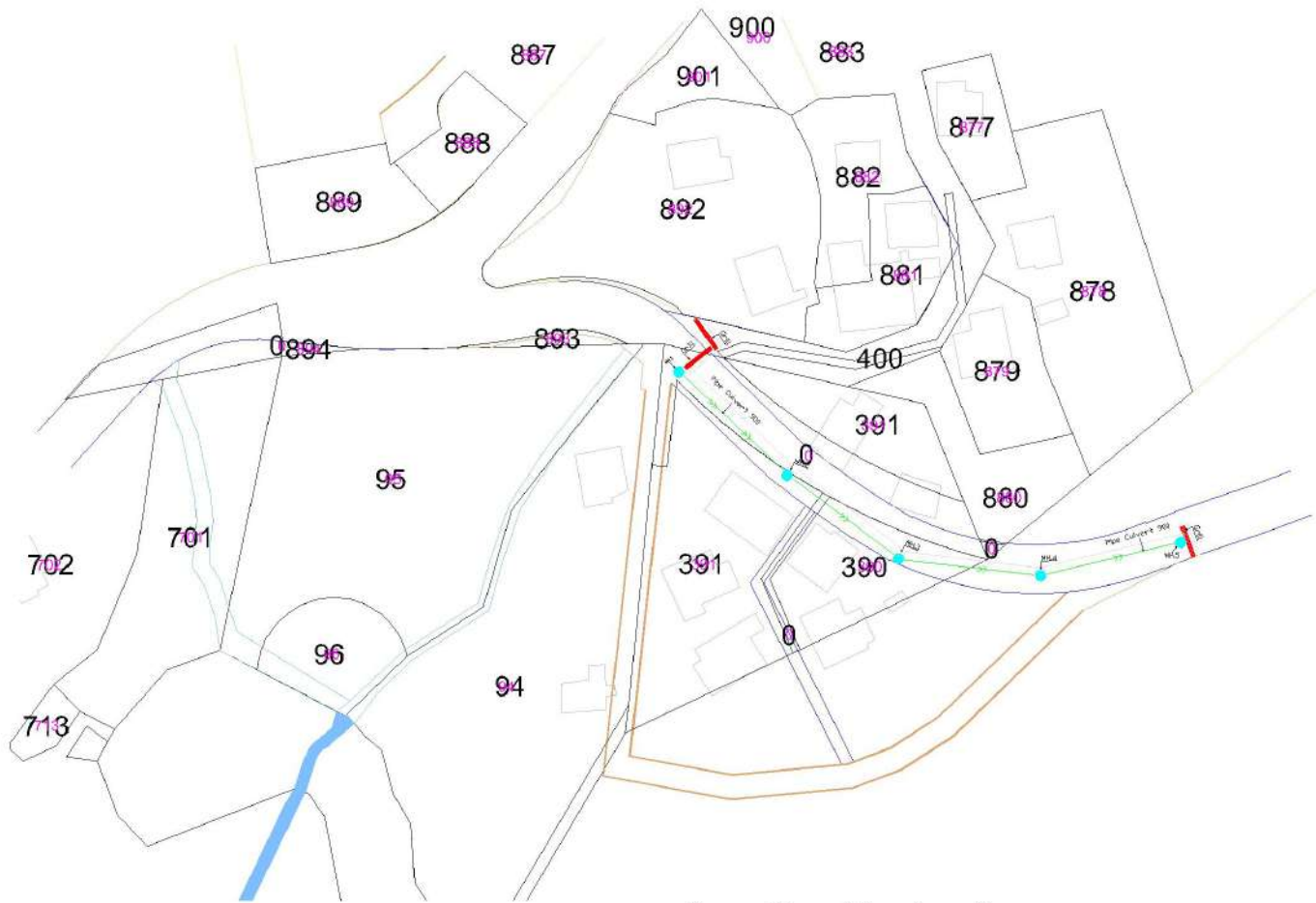




تصريف مياه البسيط ( جميل المشاعلة )



تصريف مياه امطار جسر الزيتونه



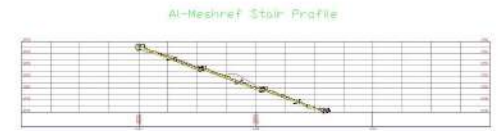
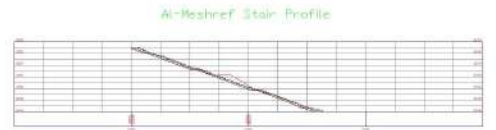
تصريف مياه امطار الشماسين



تصريف مياه البسيط ( جميل المشاعلة )



PRODUCED BY AN AUTODESK EDUCATIONAL PRODUCT



المشرف - درج

PRODUCED BY AN AUTODESK EDUCATIONAL PRODUCT

PRODUCED BY AN AUTODESK EDUCATIONAL PRODUCT

PRODUCED BY AN AUTODESK EDUCATIONAL PRODUCT

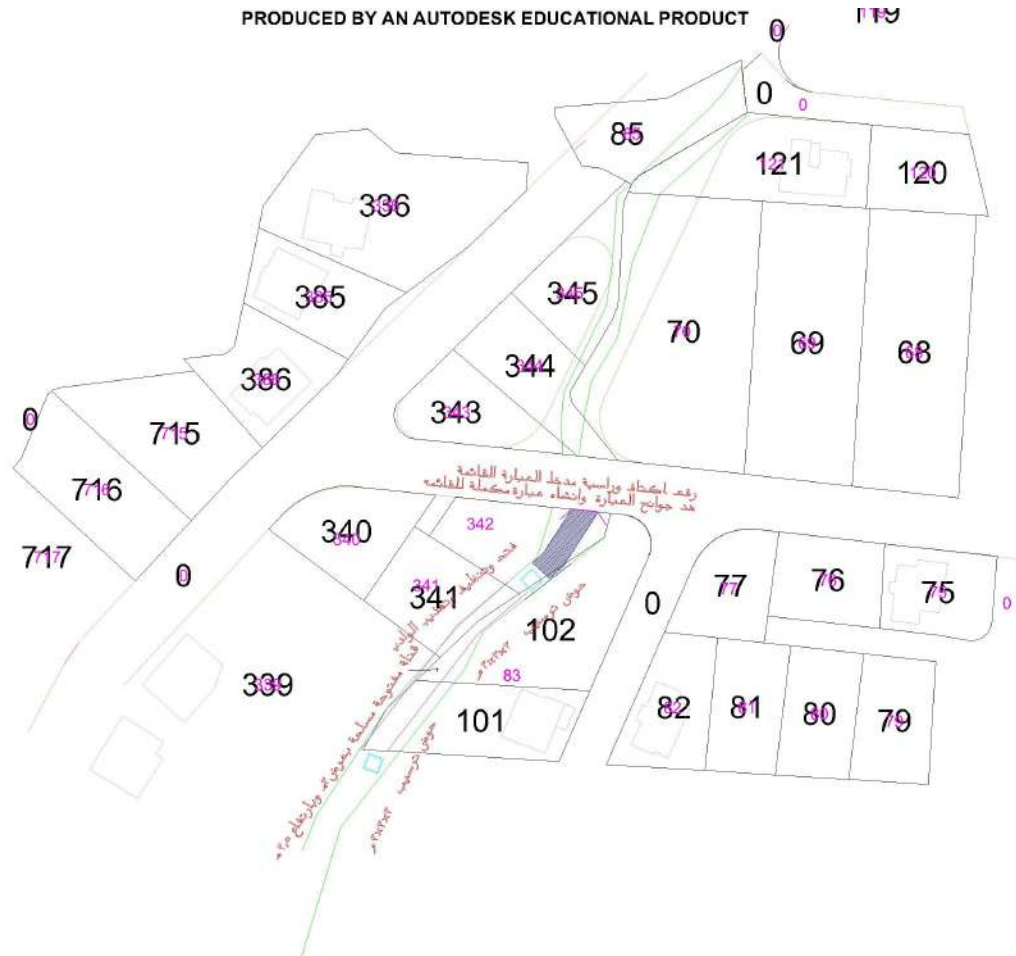
PRODUCED BY AN AUTODESK EDUCATIONAL PRODUCT



درج البلاد ( حسنات )

PRODUCED BY AN AUTODESK EDUCATIONAL PRODUCT

PRODUCED BY AN AUTODESK EDUCATIONAL PRODUCT



# حوض ترسيبي - مقابل المدرسة الثانوية للبنين

PRODUCED BY AN AUTODESK EDUCATIONAL PRODUCT

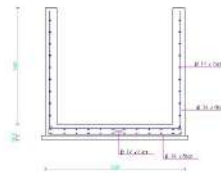
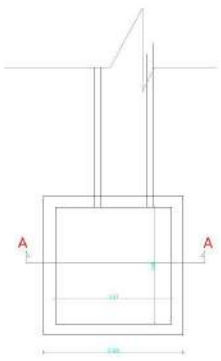
PRODUCED BY AN AUTODESK EDUCATIONAL PRODUCT



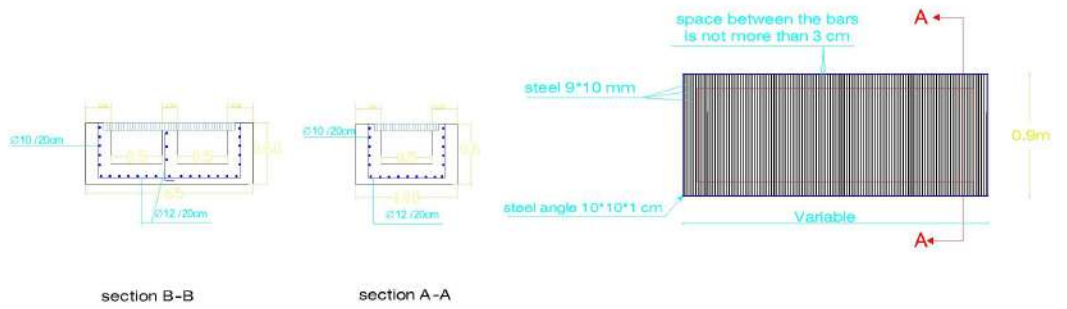
تصريف منطقة المصلى

PRODUCED BY AN AUTODESK EDUCATIONAL PRODUCT

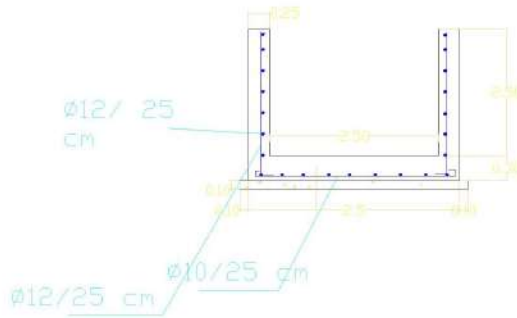
PRODUCED BY AN AUTODESK EDUCATIONAL PRODUCT



Sedimentation Tank Details



Grills Details

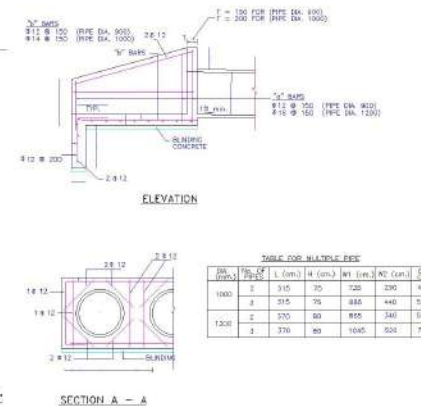
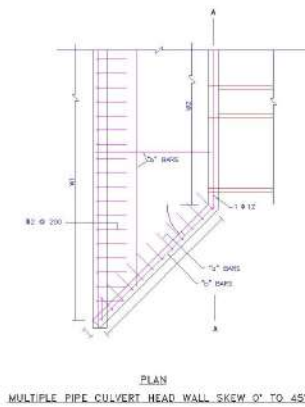
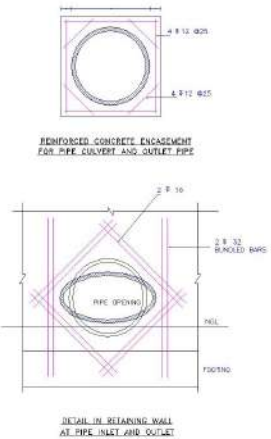
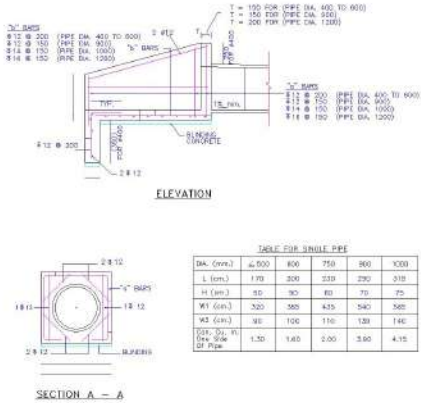
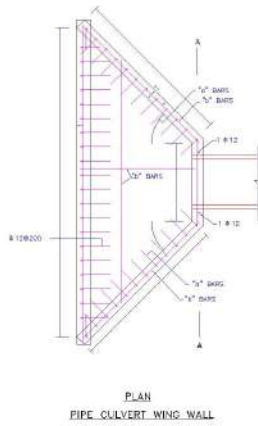
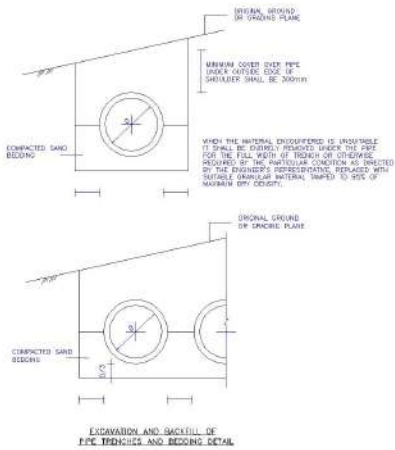


**Petra**  
Petra Development & Tourism Authority

Kafdi Muta Drainage Project	
Drawing Title: Details	
2022	Revision No. 01
1 of 1	

PRODUCED BY AN AUTODESK EDUCATIONAL PRODUCT

PRODUCED BY AN AUTODESK EDUCATIONAL PRODUCT



PRODUCED BY AN AUTODESK EDUCATIONAL PRODUCT

Petro

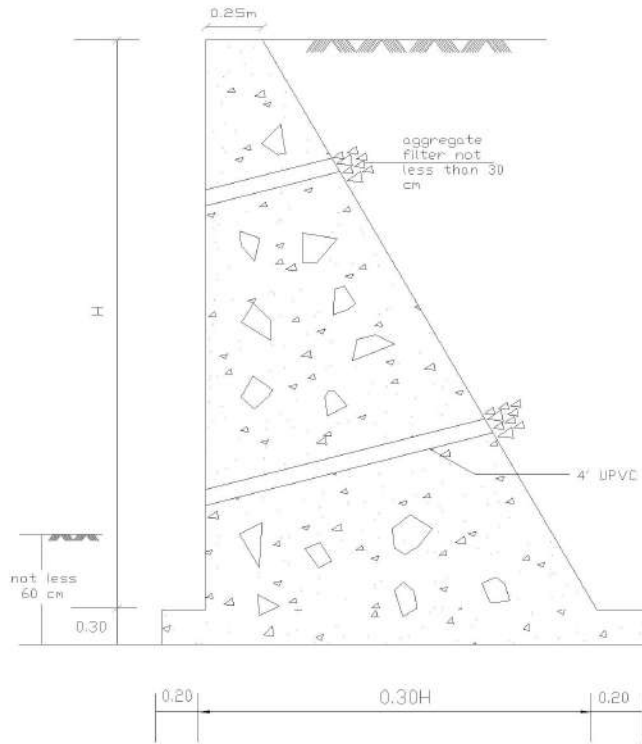
Urban Development & Transportation Authority

Full Mass Drainage Project

PROJECT TITLE: PIPE CULVERT  
PLAN, SECTION & DETAIL

DATE: 08/08/2018  
BY: [Signature]

PRODUCED BY AN AUTODESK EDUCATIONAL PRODUCT



MASONRY RETAINING WALL - TYPICAL SEC.

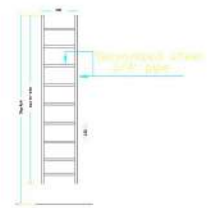
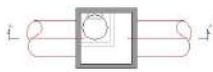
PRODUCED BY AN AUTODESK EDUCATIONAL PRODUCT



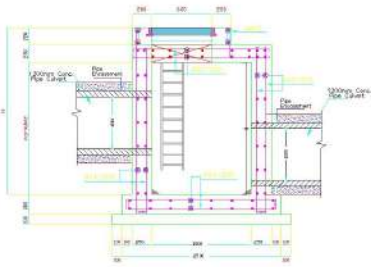
Petra Development & Tourism Authority	
Raddi Mens Drainage Project	
Issued For: Retaining Wall	
2004	Issued For: Retaining Wall
1 of 1	Drawn/Checked

PRODUCED BY AN AUTODESK EDUCATIONAL PRODUCT

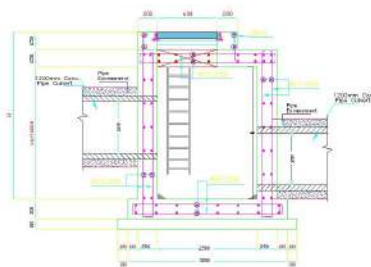
PRODUCED BY AN AUTODESK EDUCATIONAL PRODUCT



THE INSIDE STAIR DETAIL



SECTION A-A  
(FOR 1200 PIPE MANHOLE)  
(Type 1)



SECTION A-A  
(FOR Type 2 Manhole)

Type 1	1.80*1.80
Type 2	2.50*4.00

Petra Development & Tourism Region Authority

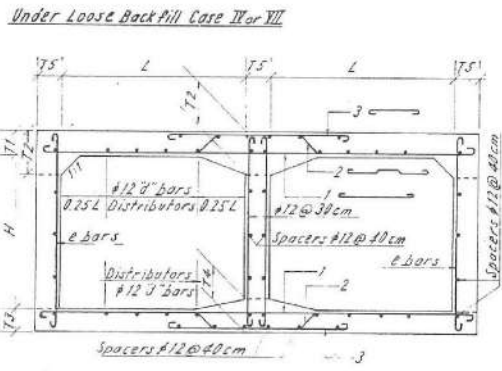
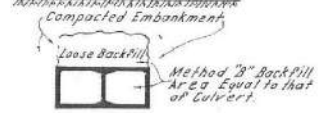
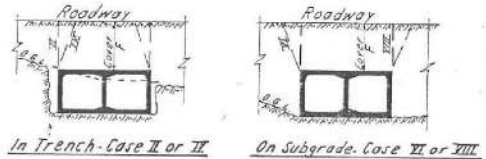
Wadi Musa Drainage Project

ISSUED YEAR: PIPC MANHOLE

2024



Culvert		Thicknesses					List of Reinforcing Steel										Quantities		Max. Cover			
Clear Span L	Height H	Top Slab	Top Slab	Bottom Slab	Bottom Slab	Side Walls	1		2		3		4"		8"		Concrete	Rein. Steel	Case II or VIII	Case IV	Case V	Area
		mm	cm	mm	cm	mm	cm	mm	cm	mm	cm	mm	cm	mm	cm	mm						
Double Box Culvert																						
1.2	1.2	15	18	15	15	15	20	20	20	20	20	20	20	20	20	20	35	1.40	1.28	3.40	3.40	2.70
1.5	1.5	15	18	15	15	15	20	20	20	20	20	20	20	20	20	20	30	1.40	1.37	4.80	4.90	3.70
1.8	1.8	15	20	15	15	15	22	22	22	22	22	22	22	22	22	22	25	1.40	1.37	5.80	6.70	4.30
2.1	2.1	15	22	15	15	15	22	22	22	22	22	22	22	22	22	22	20	1.40	1.58	8.00	10.00	5.20
2.4	2.4	15	22	15	15	15	22	22	22	22	22	22	22	22	22	22	15	1.50	1.74	10.00	12.00	6.70
2.7	2.7	15	23	16	15	15	22	22	22	22	22	22	22	22	22	22	35	1.65	1.72	10.00	12.00	7.00
3.0	3.0	15	25	16	15	15	22	22	22	22	22	22	22	22	22	22	30	1.65	1.72	10.00	12.00	7.00
3.3	3.3	15	25	16	15	15	22	22	22	22	22	22	22	22	22	22	25	1.65	1.72	10.00	12.00	7.00
3.6	3.6	15	25	16	15	15	22	22	22	22	22	22	22	22	22	22	20	1.75	1.84	10.00	12.00	7.00
3.9	3.9	15	27	16	15	15	22	22	22	22	22	22	22	22	22	22	15	1.95	2.17	10.00	12.00	7.00
4.2	4.2	15	28	16	15	15	22	22	22	22	22	22	22	22	22	22	35	1.80	1.77	10.00	12.00	7.00
4.5	4.5	15	28	16	15	15	22	22	22	22	22	22	22	22	22	22	30	1.80	1.86	10.00	12.00	7.00
4.8	4.8	15	28	16	15	15	22	22	22	22	22	22	22	22	22	22	20	1.80	1.86	10.00	12.00	7.00
5.1	5.1	15	28	16	15	15	22	22	22	22	22	22	22	22	22	22	15	1.85	2.01	10.00	12.00	7.00
5.4	5.4	15	28	16	15	15	22	22	22	22	22	22	22	22	22	22	10	2.00	2.16	10.00	12.00	7.00
5.7	5.7	15	28	16	15	15	22	22	22	22	22	22	22	22	22	22	35	2.05	2.41	10.00	12.00	7.00
6.0	6.0	15	28	16	15	15	22	22	22	22	22	22	22	22	22	22	30	2.00	2.35	10.00	12.00	7.00
6.3	6.3	15	28	16	15	15	22	22	22	22	22	22	22	22	22	22	25	2.10	2.18	10.00	12.00	7.00
6.6	6.6	15	28	16	15	15	22	22	22	22	22	22	22	22	22	22	20	2.20	2.29	10.00	12.00	7.00
6.9	6.9	15	28	16	15	15	22	22	22	22	22	22	22	22	22	22	15	2.20	2.43	10.00	12.00	7.00
7.2	7.2	15	28	16	15	15	22	22	22	22	22	22	22	22	22	22	35	2.15	2.28	10.00	12.00	7.00
7.5	7.5	15	28	16	15	15	22	22	22	22	22	22	22	22	22	22	30	2.20	2.25	10.00	12.00	7.00
7.8	7.8	15	28	16	15	15	22	22	22	22	22	22	22	22	22	22	25	2.30	2.35	10.00	12.00	7.00
8.1	8.1	15	28	16	15	15	22	22	22	22	22	22	22	22	22	22	20	2.30	2.57	10.00	12.00	7.00
8.4	8.4	15	28	16	15	15	22	22	22	22	22	22	22	22	22	22	15	2.40	2.62	10.00	12.00	7.00
8.7	8.7	15	28	16	15	15	22	22	22	22	22	22	22	22	22	22	35	2.50	2.77	10.00	12.00	7.00
9.0	9.0	15	28	16	15	15	22	22	22	22	22	22	22	22	22	22	30	2.50	2.78	10.00	12.00	7.00
9.3	9.3	15	28	16	15	15	22	22	22	22	22	22	22	22	22	22	25	2.60	2.77	10.00	12.00	7.00
9.6	9.6	15	28	16	15	15	22	22	22	22	22	22	22	22	22	22	20	2.70	2.78	10.00	12.00	7.00
9.9	9.9	15	28	16	15	15	22	22	22	22	22	22	22	22	22	22	15	2.80	2.97	10.00	12.00	7.00
10.2	10.2	15	28	16	15	15	22	22	22	22	22	22	22	22	22	22	35	2.90	3.27	10.00	12.00	7.00
10.5	10.5	15	28	16	15	15	22	22	22	22	22	22	22	22	22	22	30	2.90	3.23	10.00	12.00	7.00
10.8	10.8	15	28	16	15	15	22	22	22	22	22	22	22	22	22	22	25	3.10	3.44	10.00	12.00	7.00
11.1	11.1	15	28	16	15	15	22	22	22	22	22	22	22	22	22	22	20	3.10	3.44	10.00	12.00	7.00



MINISTRY OF PUBLIC WORKS  
 BRIDGE SECTION  
 BOX CULVERTS  
 TWO OPENING  
 SHEET No. 12 1-1-1972

